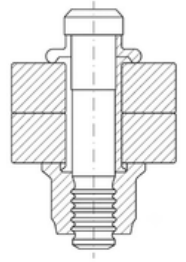
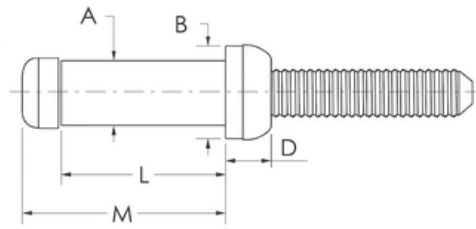




## Hi-STRUCLOCK™ Structural Blind Fastener

Material: St/St

Part No: 4031C1



Nominal Diameter	4.8	6.4	8	10	12.7
A max	5.2	7	8.75	10.45	13.8
B max	7.4	9.7	12.4	14.7	19.2
D max	4.95	6.7	7.3	8.3	11.2
Drill Dia	5.3-5.65	7.1-7.4	8.85-9.35	10.5-11.05	13.9-14.75
Tensile Strength Min. (kN)	8	14.5	23.1	32.3	57.8
Shear Strength Min. (kN)	12.4	22.7	35.8	49.4	89.6

### Part Numbers

Dimensions in mm

Nominal Diameter	Part Number	Grip Range	L	M	Nominal Diameter	Part Number	Grip Range	L	M
4.8	4031C1-05013	2.4-4.0	9.5	12.7	10	4031C1-10025	4.8-7.9	19.4	24.6
4.8	4031C1-05014	4.0-5.6	11.1	14.3	10	4031C1-10028	7.9-11.1	22.6	27.8
4.8	4031C1-05016	5.6-7.2	12.7	15.9	10	4031C1-10031	11.1-14.3	25.8	31
4.8	4031C1-05018	7.2-8.8	14.3	17.5	10	4031C1-10034	14.3-17.5	28.9	34.1
4.8	4031C1-05019	8.8-10.3	15.9	19.1	10	4031C1-10037	17.5-20.6	32.1	37.3
4.8	4031C1-05021	10.3-11.9	17.5	20.6	10	4031C1-10041	20.6-23.8	35.3	40.5
4.8	4031C1-05022	11.9-13.5	19	22.2	10	4031C1-10044	23.8-27.0	38.5	43.7
4.8	4031C1-05024	13.5-15.1	20.6	23.8	10	4031C1-10047	27.0-30.2	41.6	46.8
4.8	4031C1-05025	15.1-16.7	22.2	25.4	10	4031C1-10050	30.2-33.3	44.8	50
4.8	4031C1-05027	16.7-18.3	23.8	27	12.7	4031C1-12032	6.4-9.5	25.4	32.2
4.8	4031C1-05029	18.3-19.9	25.4	28.6	12.7	4031C1-12035	9.5-12.7	28.5	35.3
6.4	4031C1-06016	2.8-4.0	11.6	15.8	12.7	4031C1-12038	12.7-15.9	31.7	38.5
6.4	4031C1-06017	4.0-5.6	13.2	17.3	12.7	4031C1-12042	15.9-19.1	34.9	41.7
6.4	4031C1-06019	5.6-7.2	14.8	18.9	12.7	4031C1-12045	19.1-22.2	38.1	44.9
6.4	4031C1-06021	7.2-8.8	16.4	20.5	12.7	4031C1-12048	22.2-25.4	41.2	48
6.4	4031C1-06022	8.8-10.3	18	22.1	12.7	4031C1-12051	25.4-28.6	44.4	51.2
6.4	4031C1-06024	10.3-11.9	19.6	23.7	12.7	4031C1-12054	28.6-31.8	47.6	54
6.4	4031C1-06025	11.9-13.5	21.2	25.3	12.7	4031C1-12058	31.8-34.9	50.8	57.6
6.4	4031C1-06027	13.5-15.1	22.8	26.9	12.7	4031C1-12061	34.9-38.1	53.9	60.7
6.4	4031C1-06029	15.1-16.7	24.3	28.5	12.7	4031C1-12064	38.1-41.3	57.1	63.9
6.4	4031C1-06030	16.7-18.3	25.9	30					
6.4	4031C1-06032	18.3-19.9	27.5	31.6					
8	4031C1-08022	4.8-7.9	17.6	21.6					
8	4031C1-08025	7.9-11.1	20.8	25.4					
8	4031C1-08029	11.1-14.3	24	28.6					
8	4031C1-08032	14.3-17.5	27.1	31.8					
8	4031C1-08035	17.5-20.6	30.3	34.9					
8	4031C1-08038	20.6-23.8	33.5	38.1					
8	4031C1-08041	23.8-27.0	36.7	41.3					

